

# POWER

DENTAL GROUP



POWER CATALOG

# POWER FULCRUM FORCEPS KIT

Code:   
5042

An extraction kit designed to perform full mouth extractions, primarily using two (2) instruments and complimentary root twists for severing the periodontal ligament. The 360 (degree symbol) rotational pad of the fulcrum forceps offers pivotal positions within the oral cavity to form any ridge and allows for strategic positioning (or placement) onto either the Buccal or lingual area in the mouth. Different from certain conventional extraction methods, the 5042, "Fulcrum Forceps", utilizes lever mechanics and light rotational pressure to create constant stress on the periodontal fibers for atraumatic extractions.



5042-1 Fulcrum Forcep Left



5042-2 Fulcrum Forcep Right



4033-1  
Flex Twist  
Periosteal  
Tip SE



4033-2  
Flex Twist  
Periosteal  
Tip SE

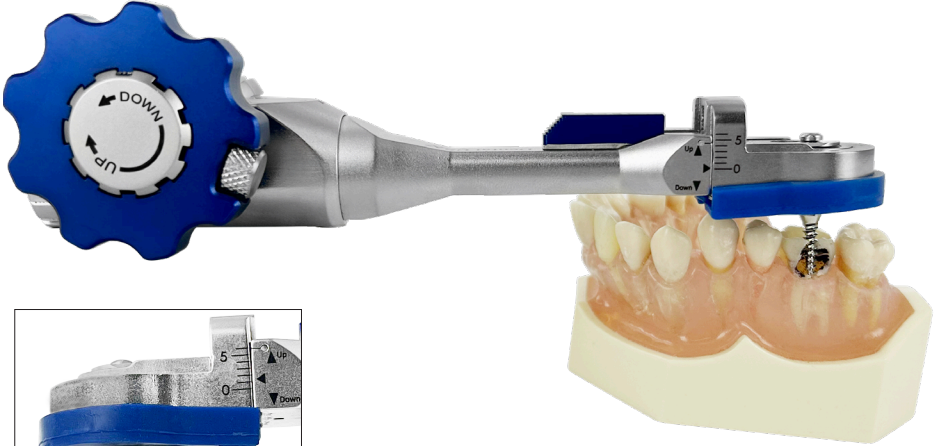


4033-3  
Flex Twist  
Elevator  
Offset D/E

# POWER X-EXTRACTOR



A specialized mechanical extraction instrument utilizing vertical force to retrieve dental root fragments or remove entire tooth structures anywhere in the intra-oral cavity. Whether it be subgingival cases or intact crowns, the 7820, "Power X-Extractor", will produce (provide or produce or generate) constant force (or stress) in a controlled manner onto the periodontal fibers forcing the fibers to stretch for an atraumatic extraction.



7820-1B Regular Anchor 27.5mm x 2.2mm



7820-2B Regular Anchor 27.5mm x 1.8mm



7820-1 Regular Anchor 27.5mm x 2.7mm



7820-1L Long Regular Anchor 31.5mm x 2.7mm



7820-2 Root Anchor 34.5mm x 2.2mm



7820-2L Long Root Anchor 36.5mm x 2.2mm



1930-4G FPT-2 Mesial/Distal D/E Flexible

# POWER CROWN REMOVERS™

Code:  
4638



Patents No. D734, 852C

A set of crown removers one (1) left and one (1) right, used for the removal of any temporary or permanently bonded crowns. Unlike conventional methods for removing crowns requiring sectioning, the 4638 "Power Crown Removers" rather streamlines crown removal utilizing push and pull mechanics (opposing forces) and pre-drilled holes.



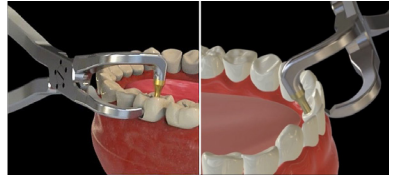
4638-1  
Crown  
Remover (L)



4638-2  
Crown  
Remover (R)

4636 2.0mm Diamond Bur- Gold (5pack): For Regular Crowns

4637 2.0mm Diamond Bur- Silver (5pack): For Zirconia Crowns

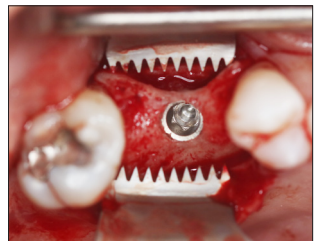
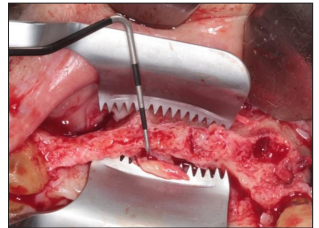


# POWER FLAP RETRACTORS

Code:  
6458



A set of two (2) 12mm and 18mm self-flap retractors designed to hold open flaps during surgical procedures. The hands-free device provides a better field of view, more operating room, and an extra hand for the procedure.



# POWER TWIST

Code:  
4032



Patent No. D700331S / D700329S

A universal extraction set of six (6) instruments utilizing patented twist designs for severing the periodontal ligament and the elevation of special decayed tooth cases or regular extractions. Unlike conventional methods using standard elevators with two (2) working ends, the 4032 "Power Twist Elevator and Periostome Set" engages one (1) way thus reducing the risk of wrongful tooth elevations.



**Periostome Handle**



3894G

Power Twist  
Periostome  
3mm STR-L



3895G

Power Twist  
Periostome  
3mm STR-R



3896G

Power Twist  
Periostome  
3mm CVD-L



3897G

Power Twist  
Periostome  
3mm CVD-R



4023

Power Twist  
Elevator  
4mm STR-L



4024

Power Twist  
Elevator  
4mm STR-R



**Elevator Handle**

# POWER TWIST ROOT PICK

Code:  
4033M



Patent No. D700.331S/D700.329S

A set of three (3) twist periostome instruments used for severing the periodontal ligament and retrieving severed root fragments.



# FLEX LUXATION SET

Code:   
4035

Patent No. USD700331S/USD700329S

A complete and universal set of (6) durable luxators designed with tapered tips for deeper socket penetration when luxating is being performed. The titanium coating and flexible metal material allows for greater control and positioning during extraction procedures thus reducing the risk of damage to surrounding teeth and tissues.



4035-1  
STR 2.5mm  
Gold Tip



4035-2  
CVD 2.5mm  
Gold Tip



4035-3  
STR 3.5mm  
Gold Tip



4035-4  
CVD 3.5mm  
Gold Tip



4035-5  
STR 4.5mm  
Gold Tip



4035-6  
CVD 4.5mm  
Gold Tip

# FLEX ELEVATOR SET

Code:   
4034

Patent No. USD700329S, USD743550S

A set of six (6) universal and durable elevators made with high carbon spring steel used for full mouth and heavy-lifting extractions. The heavy lifting elevators are titanium coated which allow for more control and stability during tooth extractions.



4034-1  
Apexo 301  
STR 2.9mm  
Gold Tip



4034-4  
Seldin 34S  
STR 4.0mm  
Gold Tip



4034-2  
Apexo 301  
IN 2.9mm  
Gold Tip



4034-3  
Apexo 301  
OUT 2.9mm  
Gold Tip



4034-5  
E77 IN  
4.0mm  
Gold Tip



4034-6  
E77 OUT  
4.0mm  
Gold Tip

# FLEX PDL ELEVATOR GOLD SET

Code:  
3799



Patent No. D700331S/D700329S

A tactical set of seven (7) varying extraction instruments for luxating and severing the periodontal ligament with minimal trauma to the surrounding tissue. These instruments are adaptable and designed with the weight of a luxator and the precision of a periosteum for any tooth extraction case.



3799-1  
3mm STR  
Gold Tip



3799-2  
3mm CVD  
Gold Tip



3799-3  
Spade STR  
Gold Tip



3799-4  
Distal  
Small  
Gold Tip



3799-5  
Mesial  
Small  
Gold Tip



3799-6  
Distal  
Large  
Gold Tip



3799-7  
Mesial  
Large  
Gold Tip



# FLEX PDL ACCU LUXATING SET

Code:  
3798



Patent No. D684.264S

A complete full-range set of ten (10) luxating instruments for performing full mouth extractions. The 3798, "Accu Luxating Set", is design with high carbon spring metal. The springy, flexible design allows for controlled movements that gently loosen the tooth from the socket, thus, reducing the likelihood of damaging surrounding tissues. Most popular within the set are the four (4) full-access spades luxators.



3796-1  
Spade  
STR



3796-2  
Spade  
CVD



3796-3  
Spade  
Left



3796-4  
Spade  
Right



3797-1  
PDL  
STR



3797-2  
PDL  
CVD



3797-4  
PDL  
Small  
Distal



3797-5  
PDL  
Small  
Mesial



3797-6  
PDL  
Medium  
Distal



3797-7  
PDL  
Medium  
Mesial



# FLEX PERIOTOME & ROOT EXTRACTION KIT

Code:  
1930FSG



Patent No. D684.264S/D700.331S

A comprehensive kit of flexible periostomes and extraction instruments for severing and removing the periodontal ligament and retrieving root fragments or tooth structures. The flexibility of the periostomes are designed from high carbon spring steel, which is known for its ability to deform and return to its original shape. The flexible metal allows the device to contour around the tooth structure while maintaining rigidity when applying apical pressure.



1930-1G  
STR S/E  
Flexible



1930-2G  
CVD S/E  
Flexible



1930-3G  
Screw Root  
Extraction S/E  
Non Flexible Tip



1930-3SG  
Screw Root  
Extraction  
Short Handle  
Non Flexible Tip



1930-5G  
FPT-1 D/E  
Flexible



1930-6G  
Twist D/E  
Flexible



7821G  
Screw Root  
Extraction  
Anchor For  
Handpiece  
30mm



1930-4G  
FPT-2D/E  
Flexible



# MINNESOTA RETRACTOR

Code:  
6420N



6420N Minnesota Retractor Special Handle Heavy Hold

# PRITCHARD D/E RETRACTOR

Code:  
3540



3540 Periosteals Pritchard Double End With Off Angle Titanium Edition

# RIDGE COMPRESSING

Code:  
5033



**Use:** To fracture and compress the alveolar process after extraction of teeth



# ATRAUMATIC EXTRACTION FORCEPS

Code:  
5040



**Use:** A complete set of six (6) universal extraction forceps used for special subgingival or any regular (any) tooth extractions. Unlike conventional forceps, the 5040 "Atraumatic Forceps", were specially designed with a higher hinge point for less force needed to perform extractions while maintaining maximum control during use.



4974P Upper Premolar



4975P Lower Premolar



4976P Upper Anterior



4977P Lower Anterior



4979P Upper Molars



4980CP Lower Molars



# ROOT ATRAUMATIC

Code:  
4994T



Code:  
4997T



Use: To remove fragmented roots from the tooth socket



4994T 47SR Lower Root



4997T 51SR Upper Root

# SPECIAL MOLAR SET

Code:  
4972



Code:  
4973



4972 22 L- Lower Wisdom Left



4973 22 R- Lower Wisdom Right



# X TUNNELING PROCEDURE SET

Code:  
1952FS



Patent No. US D743,550S

Use: A complimentary system with different tips, bends and curves for adaptation into the tooth and gum area



1977  
VT-4



1952  
VT-1



1954S  
VT-3  
Spade



1954C  
VT-3  
CVD



1953  
VT-2



1954  
VT-3



1957  
VT-5



# POWER PERIOSTEUM RELEASE KIT

Code:  
6455FS



Patent No. USD700329S/USD743550S

A set of five (5) instruments designed to perform Periosteal Release Incisions (PRI) or the expansion of soft tissue flaps utilizing brush technique instead of inconsistent incisions using a scalpel blade and risk perforating the gums.



**6455**  
Soft Tissue  
Expander/Brush  
& Retractor  
Regular Left



**6455S**  
Soft Tissue  
Expander/Brush  
& Retractor  
Small Left



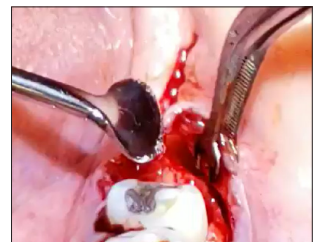
**6456**  
Soft Tissue  
Expander/Brush  
& Retractor  
Regular Right



**6456S**  
Soft Tissue  
Expander/Brush  
& Retractor  
Small Right



**6511E** Tissue Suture Forceps  
Special Edition Atraumatic 18cm CVD



# HARVESTING OF PALATAL SCALPEL HANDLE

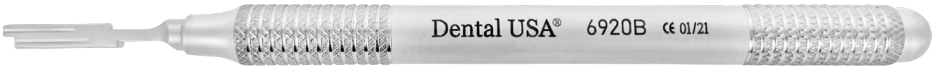
Code:  
6920S



Use: To conduct palatal harvesting for tissue grafting



6920A Special Offset Design Holds 2 Blades 1mm



6920B Special Offset Design Holds 2 Blades 2mm



6966 Easy Blade Removal Forcep

# POWER SURGICAL CURETTES

Code:  
4126E



Use: To remove granular tissue after an extraction



4101SE  
84S  
2.2mm  $\pm$ 5%



4102SE  
85S  
2.8mm  $\pm$ 5%



4103SE  
86S  
3.3mm  $\pm$ 5%



4103ASE  
86AS Off Angle  
3.3mm  $\pm$ 5%

# DR. ADY PALTI IMPLANT SURGERY KIT BLACK EDITION

Code:  
7830A



6710E Suction 6mm



6511E Suture Pliers



3533E Periosteals Retractor



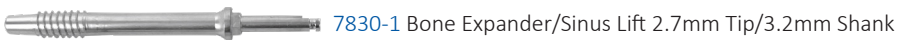
3516E Periosteals Elevator



2002E Bone Collector



7830-6 Universal Latchet Driver



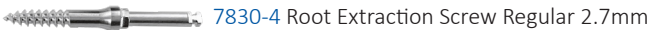
7830-1 Bone Expander/Sinus Lift 2.7mm Tip/3.2mm Shank



7830-2 Bone Expander/Sinus Lift 2.0mm Tip/2.7mm Shank



7830-3 Implant HEX Driver 2.5mm



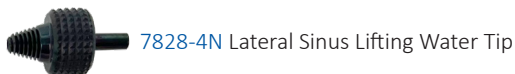
7830-4 Root Extraction Screw Regular 2.7mm



7830-5 Root Extraction Screw Narrow 2.2mm



7828-3 Lateral Approach Reamer LAR 2.5mm



7828-4N Lateral Sinus Lifting Water Tip



7828-5 Silicon Tube







5409B Castroviejo STR T/C 16cm  
Black Titanium

5501N Mathieu T/C Thin  
16cm Black Titanium



5505BN Crile-Wood T/C 15cm Black Titanium



5513BN Castroviejo STR  
T/C 16cm Black Titanium

5514BN Castroviejo  
STR T/C 18cm  
Black Titanium



5515BN Castroviejo CVD  
T/C 16cm Black Titanium

5516BN  
Castroviejo CVD T/C  
18cm Black Titanium



# SUPER CUT SCISSOR SET PREMIUM BLACK EDITION

Code:  
5930B



5911B Goldman-Fax STR 12.5cm

5919B Iris STR 11.5cm

5908CB Metzenbaum CVD 14cm

5917B La Grange CVD 11.5cm

5907B Dean 16cm

5911CB Goldman-Fax CVD 12.5cm

5905B Kelly CVD 16cm

# BLACK EDITION SCALER SET

Code: 1250T 

Use: Titanium Black Edition Scaler Set for the removal of supragingival calculus on all anterior & premolar surfaces.



# BLACK EDITION PROBE SET

Code: 1151 

Use: To verify the depth of the periodontal pocket vertically or horizontally. The control point for diagnosing the patient's periodontal symptom.



# POWER FLEX DETACHABLE ELEVATOR KIT

Code:   
4036

Use: A detachable and multi-function kit to loosen teeth, remove roots or impacted teeth when compromised



4036-7 Detachable Elevator Handle



4036-1  
Luxation  
STR  
3.5mm



4036-2  
Spade



4036-3  
Apexo  
301  
2.7mm



4036-4  
Selden  
34S  
4.0mm



4036-5  
Selden  
46 In  
3.4mm



4036-6  
Selden  
46R Out  
3.4mm



4036-8  
3rd Molar  
Elevator

# POWER IMPLANT GUIDE KIT™

Code:  
1979B



A complete free-hand Implant guide system utilizing five (5) instruments for the positioning and placement of single tooth or multiple teeth implant cases. The tapered self-centering guides for anteriors and posteriors account for varying sized gaps between teeth thus providing immediate guidance for pilot placement while the Multi-1 and Multi-2 guides assist with adjacent implant placement and multi site implants.



1979-1



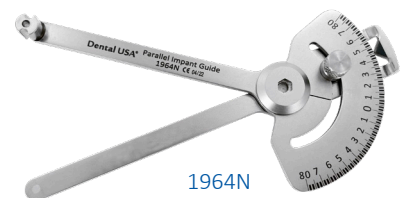
1979-2



1950-1



1950-2

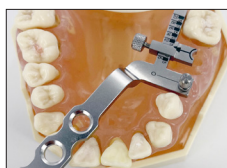


1964N

## Implant Centering Guide



## Implant Multiple Guide



## Parallel Guide

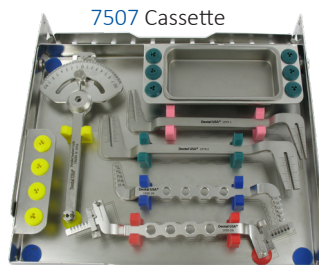
Used on either edentulous Maxillary or Mandibular.

2037M Depth Gauge Abutment Gingival & Implant 12cm



*Sold Separately*

7507 Cassette



*Sold Separately*

# TORQUE DRIVER

Code: 1984

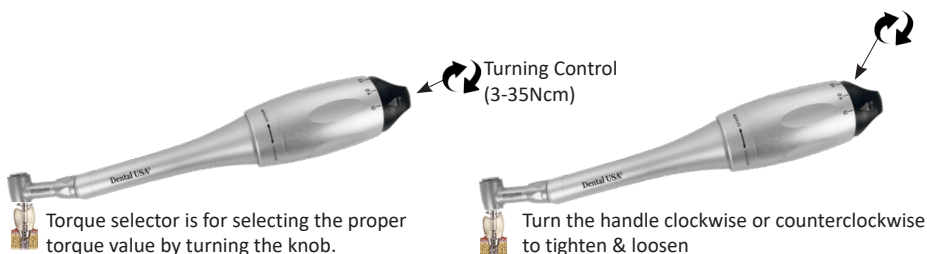


**Drivers (1.2mm)** Head can be separated from body for sterilization

S: 23.5mm 

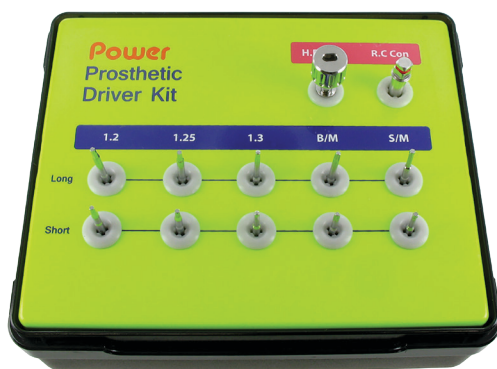
L: 30mm 

Our torque driver is able to reach deep molar areas without difficulty compared to other torque drivers.



# IMPLANT PROSTHETIC UNIVERSAL DRIVER KIT

Code: 7813



1.2mm: Ankylos, Neobiotech, Dio, Hiossen/Ostem, Megagen

1.25mm: Astra, Dentium, Zimmer

1.3mm: Japan, etc.

B/M: Branemark, Nobel Biocare

S/M: Straumann

[www.powerdentalgroup.com](http://www.powerdentalgroup.com)

© Power Dental Group All rights reserved.

# PROSTHETIC SCREW & IMPLANT FIXTURE REMOVER KIT

Code:  
7822



A complete implant screw and extraction kit with added accessories to aid in the removal of failed implants, stripped and or fractured screws. The kit is designed with multiple fixture removers with crossed threads for engaging with any implant size. Additionally, screw removal instruments are included to remove both fractured or stripped prosthetic screws.

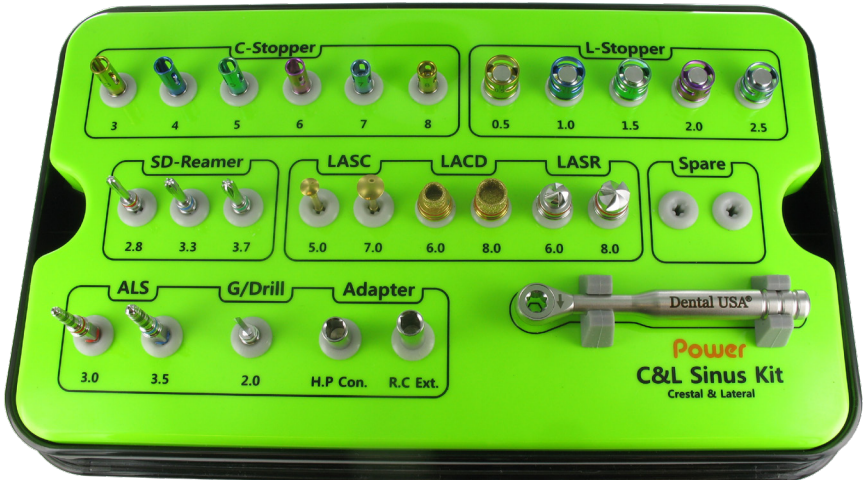


# C & L SINUS KIT: CRESTAL & LATERAL UNIVERSAL KIT

Code:  
7826



An all-in-one system to perform crestal and lateral sinus lifts. The kit is designed with added accessories for strategic procedural approaches and specially designed reamers and burrs to prevent membrane perforation.



# EASY BONE EXPANDER KIT

Code:  
7814



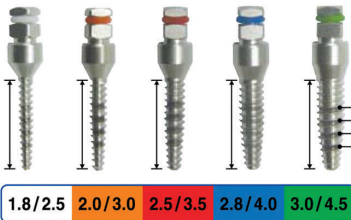
Use: Multi tool system for bone expansion



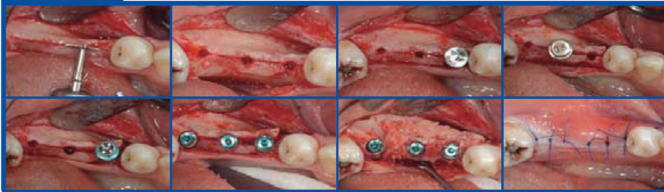
- Drill: 1.8/2.5mm 2.0/3.0mm 2.5/3.5mm 2.8/4.0mm 3.0/4.5mm
- Stopper: 4~10mm
- Hand Driver



## Expander Drill



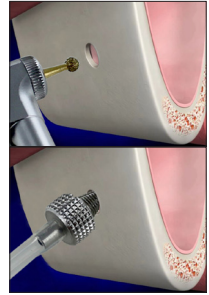
## Clinical Case





# EASY IMPLANT LATERAL SINUS LIFTING

Code:  
7828



## Easy Implant Lateral Sinus Lifting / 2mm Stop Drill System

7828-1 2mm Drill

7828-2 8, 10, 11.5, 13mm Stopper System

7828-3 Lateral Approach Reamer LAR 2.5mm #7803-3

7828-4 Special Water Lifting Tip for Lateral

7828-5 Silicone Tube for Water Separating 4mm dia x 50cm Length

7828-6 Cassette 80x75x45mm



# DRILL STOP SYSTEM KIT

Code:  
7812N



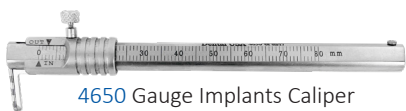
This kit is composed of 2mm, 2.5mm, 3.3mm diameter drills & 13 stoppers from 2mm to 14mm. Highly recommended for sinus approach.

# OMNI CALIPER SET OF 9

Code:  
4656



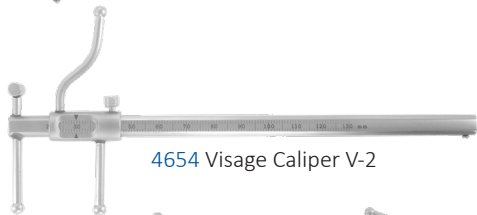
Use: Implants, cosmetic facial plastic surgery, zygoma, rhinoplasty, eyes, ear, lip



4650 Gauge Implants Caliper



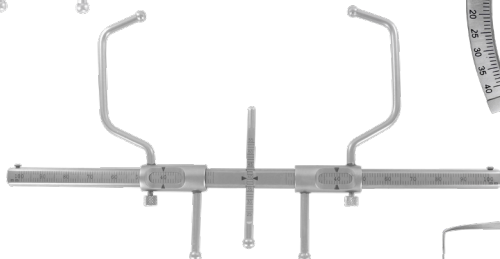
4613C Bone Caliper CVD 10cm



4654 Visage Caliper V-2



4613L Bone Caliper STR 17cm



4655 Zygoma Caliper



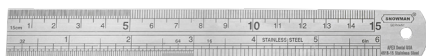
4613RA Bone Ridge Mapping Caliper



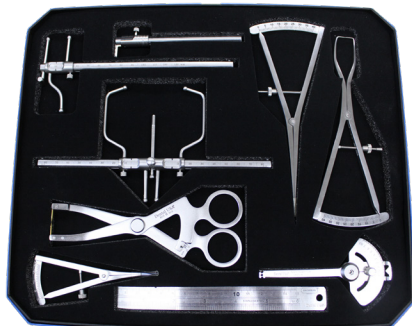
4614 Bone Ridge Mapping Caliper DA #1



1964 Paralleling Caliper



4618 Ruler 6inch/15cm

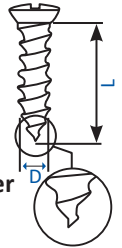


# GBR PREMIUM KIT

Code:  
1981N



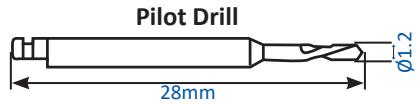
A complete guided bone regeneration kit used for many types of procedures including bone regeneration, bone grafting, insufficient bone, missing bone, or membrane placement.



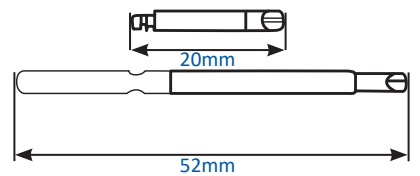
## Guided Bone Regeneration Kit

1981N-1	Screw	1.4x3mm	1pcs
1981N-2	Screw	1.4x4mm	1pcs
1981N-3	Screw	1.4x6mm	3pcs
1981N-4	Screw	1.4x8mm	3pcs
1981N-5	Screw	1.4x10mm	2pcs
1981N-6	Screw	1.4x12mm	1pcs
1981N-7	Screw	1.6x3mm	1pcs
1981N-8	Screw	1.6x4mm	1pcs
1981N-9	Screw	1.6x6mm	2pcs
1981N-10	Screw	1.6x8mm	2pcs
1981N-11	Screw	1.6x10mm	1pcs
1981N-12	Screw	1.6x12mm	1pcs
1981N-13	Screw	2.0x6mm	1pcs
1981N-14	Screw	2.0x8mm	1pcs
1981N-15	Screw	2.0x10mm	1pcs
1981N-16	Screw	2.0x12mm	1pcs
			Total: 23 pcs

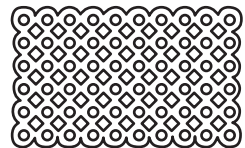
1981N-M	Titanium Mesh	36x22x0.1 thickness	1pcs
1981N-D	Fix Screw Pilot Drill	1.2mm	1pcs
1981N-20	Screw Driver Short (Handpiece)		1pcs
1981N-21	Screw Driver Long (Hand Driver)		1pcs
1981N-22	Screw Driver Handle		1pcs



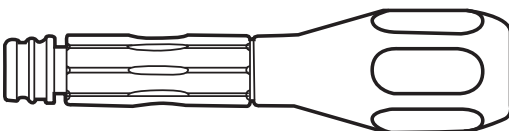
## Remover Driver

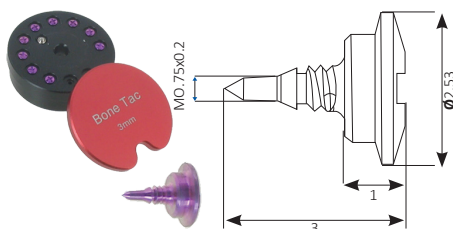
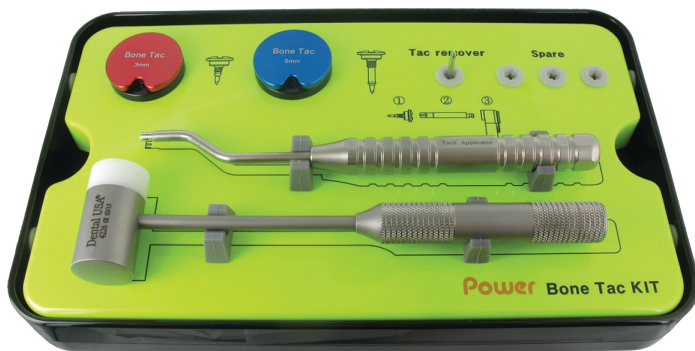


## Hole Pore Ø1.4

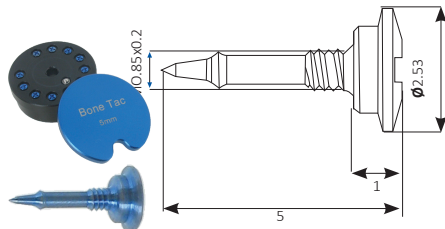


## Driver Handle





7818-3 Tack 3mm



7818-4 Tack 5mm



7818-6 Tack Applicator



4226 Mallet (5.4oz/0.15kg)



7818-5 Driver



## Related Instruments



7818-7 Tack Neck Holder/Remover

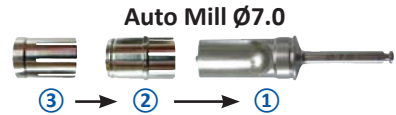
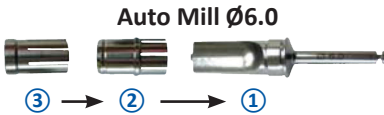
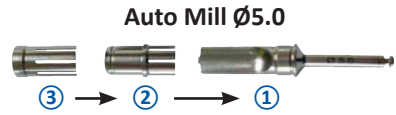
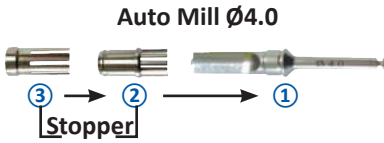


7818-8 Tack Head Holder/Remover



# BONE COLLECTOR KIT

Code:  
7810



# TREPHINE BUR & TISSUE PUNCH KIT

Code:  
1931

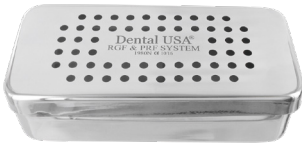


1931-1	Trephine Bur	Short	Sink	3mm/2.2mm X 12.5mm
1931-2	Trephine Bur	Short	Sink	4mm/3.2mm X 12.5mm
1931-3	Trephine Bur	Short	Sink	5mm/4.2mm X 12.5mm
1931-4	Trephine Bur	Short	Sink	6mm/5.2mm X 12.5mm
1931-5	Trephine Bur	Short	Sink	7mm/6.2mm X 12.5mm
1931-6	Trephine Bur	Short	Sink	8mm/7.2mm X 12.5mm
1931-7	Trephine Bur	Short	Sink	9mm/8.2mm X 12.5mm
1931-10	Trephine Bur	Prevent Type	Sink	9mm/8.2mm X 12.5mm
1931-11	Trephine Bur	Long	Sink	3mm/2.2mm X 21.0mm
1931-12	Trephine Bur	Long	Sink	4mm/3.2mm X 21.0mm
1931-13	Trephine Bur	Long	Sink	5mm/4.2mm X 21.0mm
1931-14	Trephine Bur	Long	Sink	6mm/5.2mm X 21.0mm
1931-20	Tissue Punch/Guide Pin			3mm X L28.5mm
1931-21	Tissue Punch/Guide Pin			4mm X L28.5mm
1931-22	Tissue Punch/Guide Pin			5mm X L28.5mm
7532	Trephine Cassette			





- Ten automatic programs and RPMs for each application
- Simple navigation:
  - Select program
  - Rotate dial
  - Press dial
- Optimal and stable temperature
- Patented



7824-6 PRF Cassette



2094 Bone Mixing Bowl



7824-2  
100 10ml  
Membranes



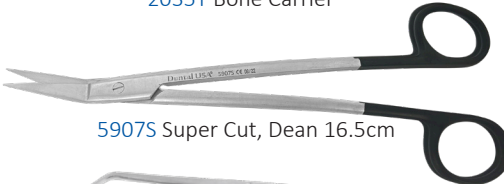
7824-3  
I-PRF  
Liquid



2034S Bone Packer IBP3/4 Serrated



2035T Bone Carrier



5907S Super Cut, Dean 16.5cm



6506 Tissue Forceps



6834 PRF Carrier



7425 Bone Tray

# PHOTOGRAPHIC MIRRORS SET

Code:  
6952K



**Use:** Stainless steel double-sided mirrors for imaging. Highly reflective and autoclavable up to 273°F.

**Sterilizing Tip:** For spotless mirrors, try wrapping the mirror within a paper towel before placing it in the sterilization pouch.



6952A

170mmX75mm

Adult Occlusal/Adult Buccal  
Child Occlusal/Child Buccal



6952B

180mmX70mm

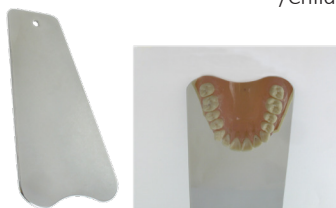
Double End  
Adult Occlusal  
/Child Occlusal



6952C

180mmX48mm

Double End  
Buccal Lateral



6952D

140mmX75mm

Single End  
Adult Occlusal



6952E

180mmX35mm

Double End  
Lingual Upper/Lingual Lower

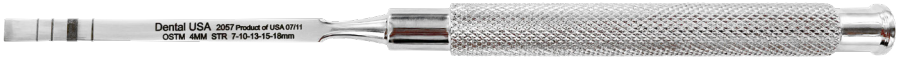


# RIDGE BONE SPLIT SET

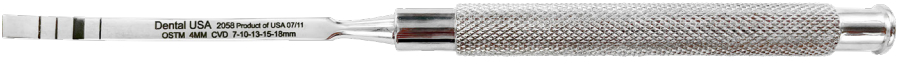
Code:  
BRBS



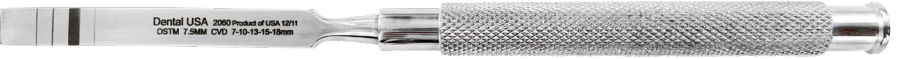
Use: For crestal ridge augmentation to increase bone support for implant placement



2057 4mm STR



2058 4mm CVD



2059 7.5mm STR



2060 7.5mm CVD



2061 6mm Jovanovic

# OSTEOTOME SET

Code:  
BOSTN



Use: For the introduction of graft material using concave tips, with adjustable depth stops

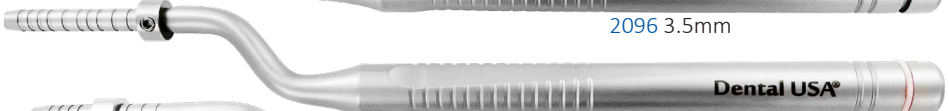
Offset Concave



2095 2mm



2096 3.5mm



2097 4.3mm



2098 5.0mm



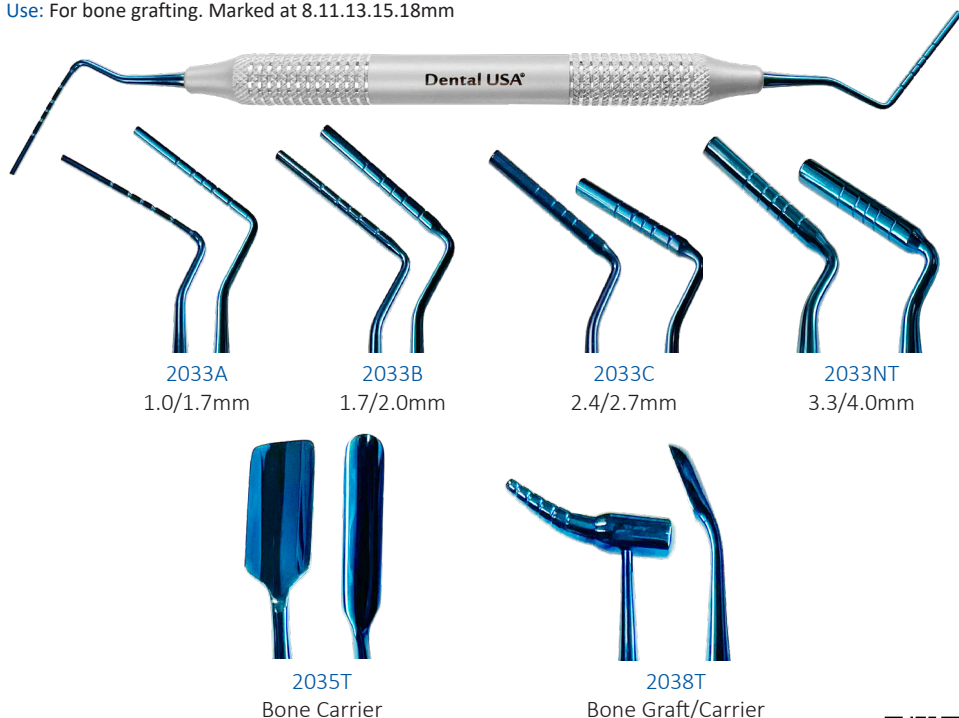
2099 5.5mm



# BONE GRAFT SET

Code:   
BBG

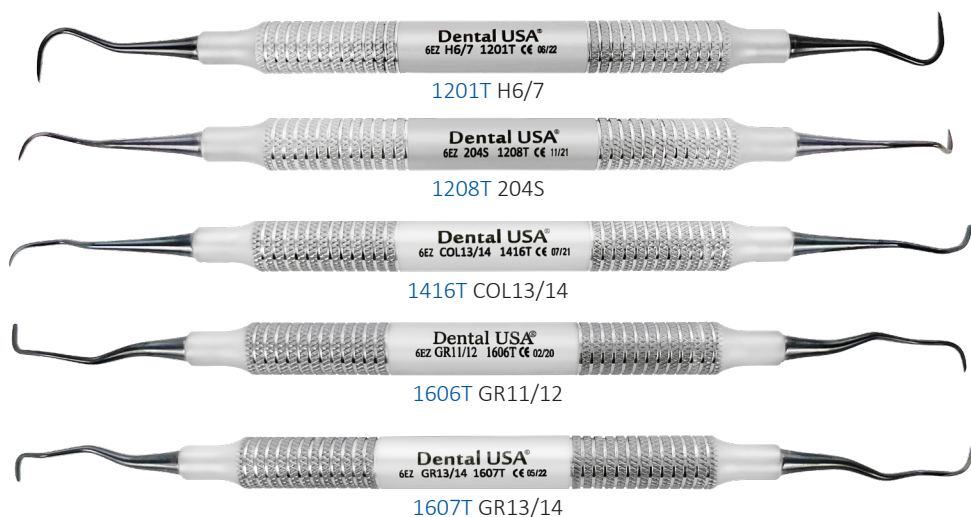
Use: For bone grafting. Marked at 8.11.13.15.18mm



Code:   
SIS

# IMPLANT SCALER SET

Use: Titanium black scaler set of 8



# SINUS LIFT SET



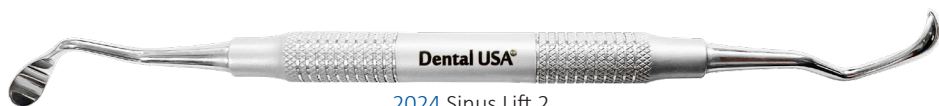
**Use:** For transport of bone graft chips from implant cavity and for condensing bone graft chips apically. Separates sinus lining from bone.



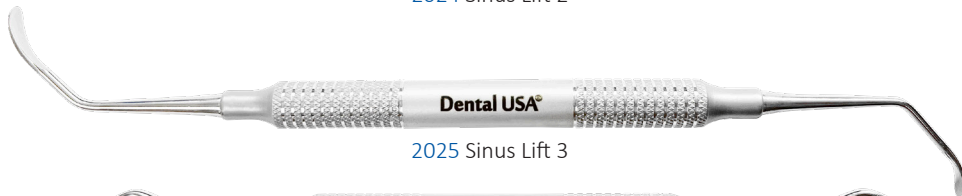
2021 Acute 6577



2023 Sinus Lift 1



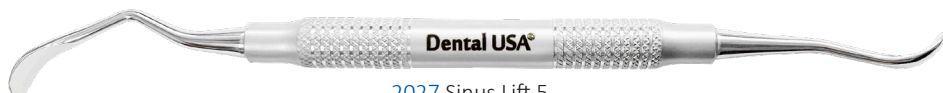
2024 Sinus Lift 2



2025 Sinus Lift 3



2026 Sinus Lift 4



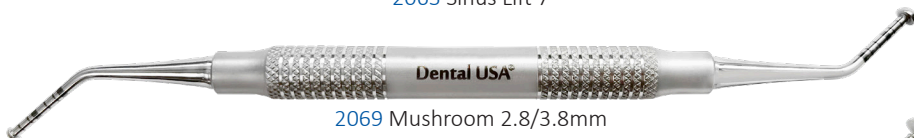
2027 Sinus Lift 5



2062 Sinus Lift 6



2063 Sinus Lift 7



2069 Mushroom 2.8/3.8mm



2070 Mushroom 4.8/5.8mm

# PERIOSTEAL ELEVATORS SET

Code:  
BIBT



Use: Retracting periosteum after removing gingival tissue



2001T Surgical Chisel



2002T Surgical Chisel



3506T Periosteals Molt9



3509T Periosteals PR3



3513T Periosteals Allen 9



3514T Periosteals 24G



3516T Periosteals Buser



3521T Periosteals HF20



3526T Periosteals Woodson1



3534T Periosteals Perio Surgical

# ADVANCE SINUS SET

Code:   
ADSI

Use: For internal sinus lift



1970  
Bone Graft  
3.8SP/2.8mm



1971  
Cobra  
3.5mm



1972  
Cobra In/Out  
2-4-6-8-10mm



2069  
Sinus 2.8/3.8  
2-4-6-8-10mm



2070  
Sinus 4.8/5.8  
2-4-6-8-10mm

# PERIOTOME SET

Code:   
BPT

Use: For cutting periodontal ligaments and loosening socket for extractions



1923T  
PT2 Posterior  
/Anterior



1924T  
PT1 Posterior



2043T  
PT1 PPAELA



2044T  
PPAEL

# NiTi ENDO PLUGGER SET

Code:  
3332D



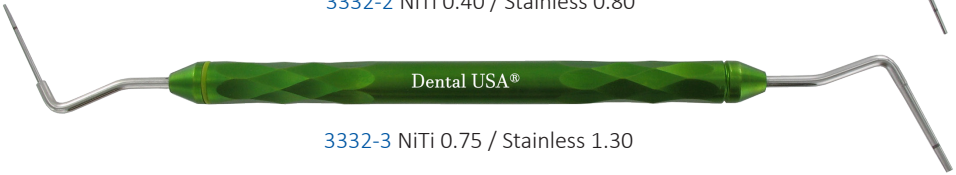
Use: Vertical pressing and compacting of filling materials



3332-1 NiTi 0.30 / Stainless 0.75



3332-2 NiTi 0.40 / Stainless 0.80



3332-3 NiTi 0.75 / Stainless 1.30

# BONE CARRIERS SET

Code:  
4310ST



Use: Bone carriers



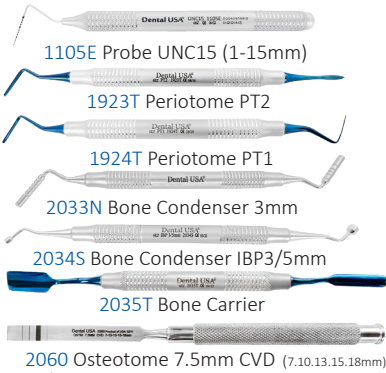
4308T S/M 2.0/2.8mm



4309T M/L 2.8/3.4mm

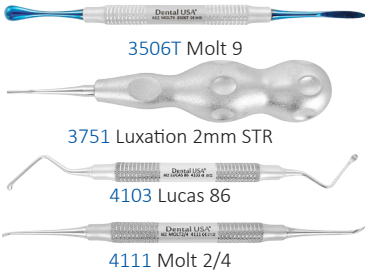


4310T M/J 2.8/3.9mm



2071 Kerrison 3mm

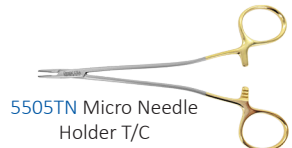
2094 Bone Mixing Bowl



4223M Mallet Mead (5oz/0.14kg)

4618 Ruler 15cm

4625 Caliper



5917T La Grange Scissor 11.5cm T/C

5920 Iris Scissor CVD

6420 Minnesota Retractor

6428 Bishop Retractor

6502 Adson 12cm

6717 Aspirator 4mm



7018N Syringe 1.8ml



7512 Surgical Cassette  
15 Hold with Accessory Rack  
8" L x 11" W x 1.25" D  
(275 x 203 x 31)

# BASIC SURGERY KIT

Code:  
7953



1607 GR13/14



1801 K15/16



1812 KOR1/2



2010 OCH-1



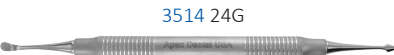
3506 Molt-9



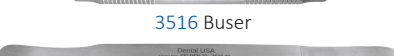
3509 PR-3



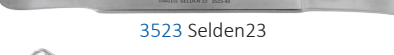
3514 24G



3516 Buser



3523 Selden23



4103S Power Curettes 86S



4103AS Power Curettes 86AS



4266 Mallet



4401 Blumenthal 15cm



4613 Caliper 8.5cm



2094 Mixing Bowl



5303C Hemostatic  
Halsted-Mosquito CVD 12.5cm



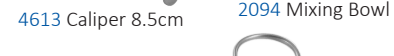
5505 Needle Holder T/C  
Crile-Wood 15cm



5916S Gum Scissor  
Goldman-Fox 12.5  
CVD T/C, Super Cut



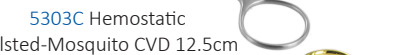
5919S Gum Scissor  
Iris STR T/C, Super Cut



6420 Minnesota Retractor



6502 Tissue Forceps Adson 1x2 12cm



6517 Tissue Forceps London-College



6902 Scalpel Handle 3G



6717 Suction Tube  
4mm



6920 Scalpel Handle



6962 #5 Mirror C/S



7105 Towel Clamps  
Backhaus 13.5cm

