

POWER
CATALOG



+1.815.363.8003 • info@powerdentalgroup.com
www.powerdentalgroup.com • www.mydentalusa.com

FULL
CATALOG



POWER FULCRUM FORCEPS KIT




Code: **5042** 



POWER TWIST ROOT PICK

Patent No. D700.331S/D700.329S

Code: **4033M** 



POWER FLEX DETACHABLE ELEVATOR KIT

Code: **4036** 

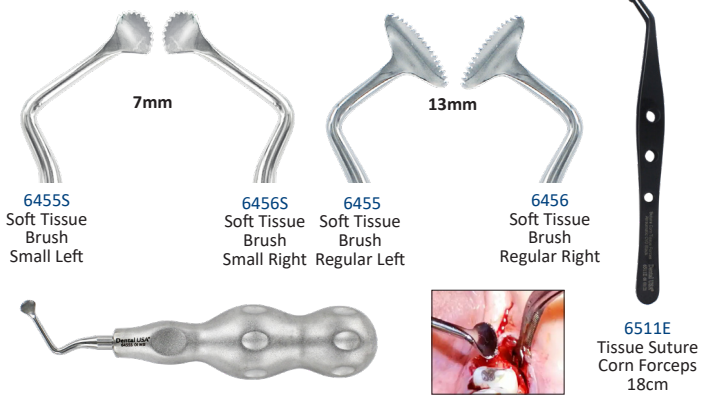


- 4036-1 Luxation STR 3.5mm
- 4036-2 Power Spade
- 4036-3 Apexo 301 2.7mm
- 4036-4 Selden 34S 4.0mm
- 4036-5 Selden 46 In 3.4mm
- 4036-6 Selden 46R Out 3.4mm
- 4036-8 3rd Molar Elevator

POWER PERIOSTEUM RELEASE KIT

Patent No. USD700329S/USD743550S

Code: **6455FS** 



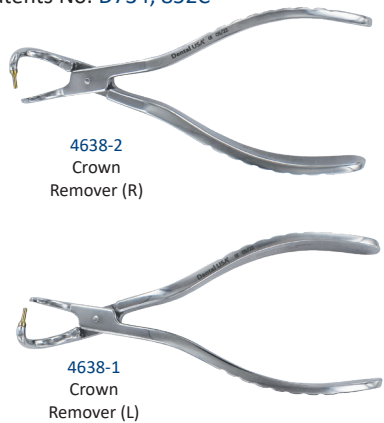
POWER CROWN REMOVERS™

Patents No. D734, 852C

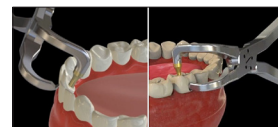
Code: **4638** 

DR. KIM HEADLIGHT

Code: **KIMS** 



- 4636 2.0mm Diamond Bur Gold (5pack) For Regular Crowns
- 4637 2.0mm Diamond Bur Silver (5pack) For Zirconia Crowns



See More:
100,000 Lumens for full visibility ALL of the time.

Full Control:
Change brightness of LED quickly using dial control.

Modular & Effective:
Easily switch loupes in and out to accommodate for ANY procedure, regardless of depth.

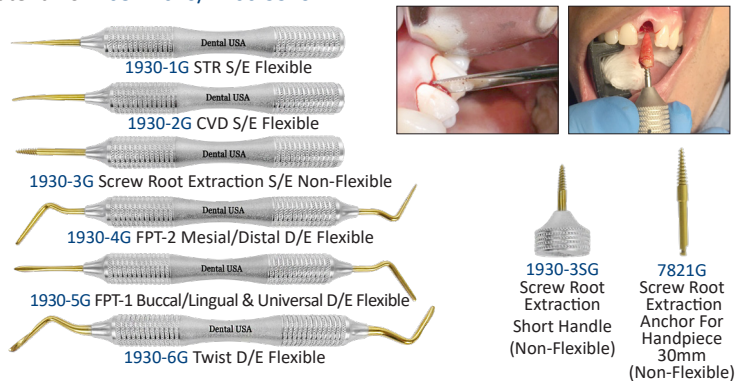
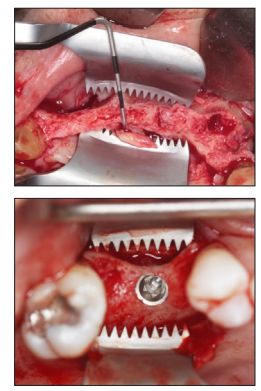
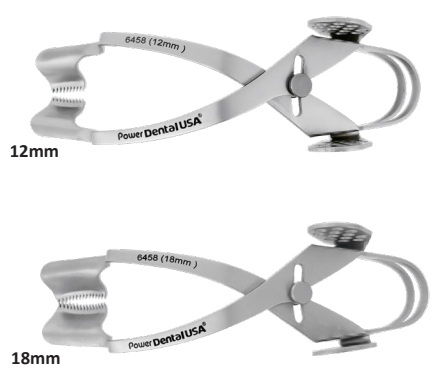
POWER FLAP RETRACTORS

Code: **6458** 

POWER FLEX PERIOTOME KIT

Patent No. D684.264S/D700.331S

Code: **1930FSG** 



POWER X-EXTRACTOR

Code: 7820 



- 1930-4G FPT-2 Mesial/Distal D/E Flexible
- 7820-1 Regular Anchor 27.5mm x 2.7mm
- 7820-1L Long Regular Anchor 31.5mm x 2.7mm
- 7820-1B Carbide Bur 27.5mm x 2.2mm
- 7820-2 Root Anchor 34.5mm x 2.2mm
- 7820-2B Carbide Bur 27.5mm x 1.8mm
- 7820-2L Long Root Anchor 36.5mm x 2.2mm

PROSTHETIC SCREW & IMPLANT FIXTURE REMOVER KIT

Code: 7822 



POWER IMPLANT GUIDE KIT™

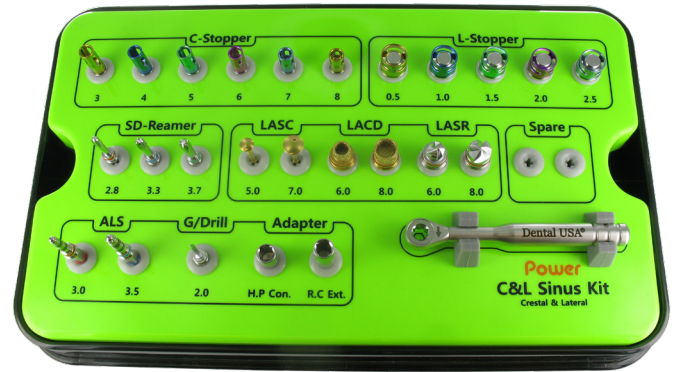
Code: 1979B 



- 1979-1 Anterior Self Centering Guide
- 1979-2 Posterior Self Centering Guide
- 1950-1 Multi 1 Implant Guide
- 1950-1 Multi 2 & 3 Implant Guide
- 1964N Edentulous Paralleling Guide

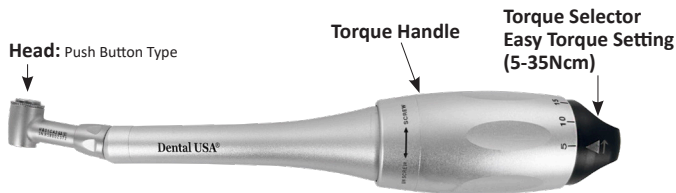
C & L SINUS KIT: CRESTAL & LATERAL UNIVERSAL KIT

Code: 7826 



POWER TORQUE DRIVER

Code: 1984 



Drivers (1.2mm) Head can be separated from body for sterilization.

- Short: 23.5mm
- Long: 30mm

POWER GBR KIT

Code: 1981N 



Guided Bone Regeneration Kit

1981N-1	Screw 1.4x3mm	1pc	1981N-12	Screw 1.6x12mm	1pc
1981N-2	Screw 1.4x4mm	1pc	1981N-13	Screw 2.0x6mm	1pc
1981N-3	Screw 1.4x6mm	3pcs	1981N-14	Screw 2.0x8mm	1pc
1981N-4	Screw 1.4x8mm	3pcs	1981N-15	Screw 2.0x10mm	1pc
1981N-5	Screw 1.4x10mm	2pcs	1981N-16	Screw 2.0x12mm	1pc
1981N-6	Screw 1.4x12mm	1pc	1981N-M	Titanium Mesh 36x22x0.1mm	1pc
1981N-7	Screw 1.6x3mm	1pc	1981N-D	Fix Screw Pilot Drill 1.2mm	1pc
1981N-8	Screw 1.6x4mm	1pc	1981N-20	Screw Driver Short (Handpiece)	1pc
1981N-9	Screw 1.6x6mm	2pcs	1981N-21	Screw Driver Long (Hand Driver)	1pc
1981N-10	Screw 1.6x8mm	2pcs	1981N-22	Screw Driver Handle	1pc
1981N-11	Screw 1.6x10mm	1pc			

BLACK EDITION PROBE SET

Code: 1151 



1151-1B EXP23/CP12

1151-2B EXP23/UNC15

1151-3B UNC15/CP12

POWER SURGICAL CURETTES

Code: 4126E 



4101SE 84S 2.2mm ±5%

4102SE 85S 2.8mm ±5%

4103SE 86S 3.3mm ±5%

4103ASE 86AS Off Angle 3.3mm ±5%

ATRAUMATIC EXTRACTION FORCEPS

Code: 
5040



FLEX PDL ELEVATOR GOLD SET

Patent No. D700331S/D700329S

Code: 
3799



POWER TWIST

Patent No. D700331S / D700329S

Code: 
4032



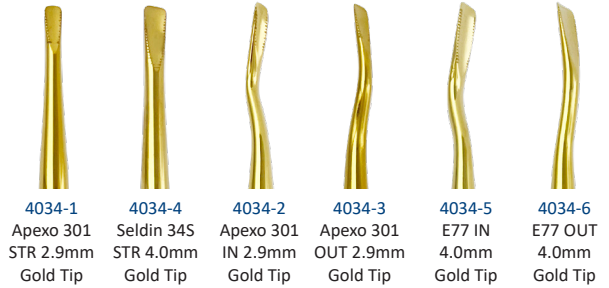
Periosteal Handle



Elevator Handle

FLEX ELEVATOR SET

Code: 
4034



POWER CENTRIFUGE MASTER II

Code: 
7824N



- Ten automatic programs and RPMs for each application
- Simple navigation
 - Select program
 - Rotate dial
 - Press dial
- Optimal and stable temperature
- Patented

Sold Separately



7824-2 100 10mL Membrane Tubes
7824-3 100 10mL I-PRF Liquid tubes



7824-5 Latex Free Tourniquet

FLEX LUXATION SET

Patent No. USD700331S/USD700329S

Code: 
4035



BLACK EDITION SCALER SET

Code: 
1250T

