



# ABOUT US



## OUR company

Power Dental Group is a leader in dental instrument manufacturing, headquartered in McHenry, IL. We are a family-run business that has been operating since 2005. Our goal is and always has been to build innovative products to empower dental professionals while staying true to the foundation of essential dental instrumentation.

We have a deep and rich history rooted in instrument servicing as well as research and development through creating highly specialized dental solutions. Since the birth of our company, Power Dental Group has continued to raise and set the standard, not only in the quality of instrumentation but in revolutionizing what the industry thinks is possible.

We take pride in our never-ending pursuit of excellence, and at Power Dental, you can trust that the best in the industry will continue to be in your hands each and every usage.

## OUR MISSION

*Empowering Dentistry to do more.*

## OUR SERVICES

### **Dental Instruments**

Power Dental Group provides a wide spectrum of instruments to fulfill the needs of elite dentists & hygienists in the industry. We carry everything from essential instrumentation to highly advanced, patented products that can only be found *here*.

### **Instrument Servicing**

Experience the ultimate peace of mind with our Power Servicing program, allowing you to keep your instruments in peak condition and ensure flawless performance each and every time you use them. With our comprehensive program, you can count on us to handle everything from routine maintenance and repairs to instrument replacement, so you can focus on what you do best - delivering exceptional care to your patients.

### **Custom Manufacturing**

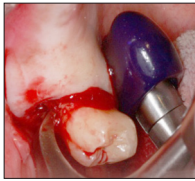
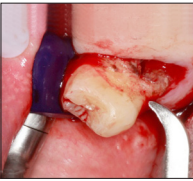
Power Dental is a leader in the industry, finding ground-breaking ways to improve efficacies utilizing custom instrument builds. Doctors, corporations, dental professionals, it does not matter; if you are in need of a custom instrument we are here to serve you.

# POWER FULCRUM FORCEPS KIT

Code:  
5042



An extraction kit designed to perform full mouth extractions, primarily using two (2) instruments and complimentary root twists for severing the periodontal ligament. The 360 (degree symbol) rotational pad of the fulcrum forceps offers pivotal positions within the oral cavity to form any ridge and allows for strategic positioning (or placement) onto either the Buccal or lingual area in the mouth. Different from certain conventional extraction methods, the 5042, "Fulcrum Forceps", utilizes lever mechanics and light rotational pressure to create constant stress on the periodontal fibers for atraumatic extractions.



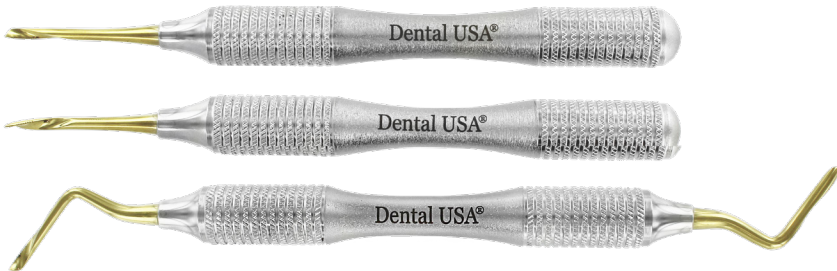
# POWER TWIST ROOT PICK

Code:  
4033M



Patent No. D700.331S/D700.329S

A set of three (3) twist periosteal instruments used for severing the periodontal ligament and retrieving severed root fragments.



# POWER X-EXTRACTOR

Code:  
7820



**Use:** A specialized mechanical extraction instrument utilizing vertical force to retrieve dental root fragments or remove entire tooth structures anywhere in the intra-oral cavity. Whether it be subgingival cases or intact crowns, the 7820, "Power X-Extractor", will produce (provide or produce or generate) constant force (or stress) in a controlled manner onto the periodontal fibers forcing the fibers to stretch for an atraumatic extraction.



1930-4G FPT-2 Mesial/Distal D/E Flexible



7820-1B Regular Anchor 27.5mm x 2.2mm



7820-2B Regular Anchor 27.5mm x 1.8mm

7820-1 Regular Anchor 27.5mm x 2.7mm



7820-1L Long Regular Anchor 31.5mm x 2.7mm



7820-2 Root Anchor 34.5mm x 2.2mm



7820-2L Long Root Anchor 36.5mm x 2.2mm

# POWER FLEX PERIOTOME KIT

Code:  
1930FSG



Patent No. D684.264S/D700.331S

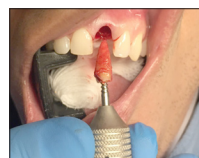
A comprehensive kit of flexible periostomes and extraction instruments for severing and removing the periodontal ligament and retrieving root fragments or tooth structures. The flexibility of the periostomes are designed from high carbon spring steel, which is known for its ability to deform and return to its original shape. The flexible metal allows the device to contour around the tooth structure while maintaining rigidity when applying apical pressure.



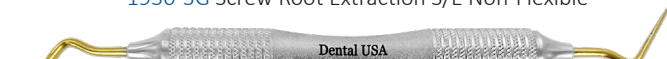
1930-1G STR S/E Flexible



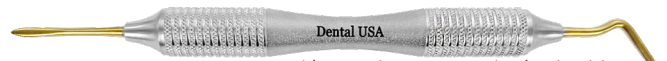
1930-2G CVD S/E Flexible



1930-3G Screw Root Extraction S/E Non-Flexible



1930-4G FPT-2 Mesial/Distal D/E Flexible



1930-5G FPT-1 Buccal/Lingual & Universal D/E Flexible



1930-6G Twist D/E Flexible



1930-3SG  
Screw Root  
Extraction  
Short Handle  
(Non-Flexible)



7821G  
Screw Root  
Extraction  
Anchor For  
Handpiece  
30mm  
(Non-Flexible)

# POWER CROWN REMOVERS™

Code:   
4638

Patents No. D734, 852C

A set of crown removers one (1) left and one (1) right, used for the removal of any temporary or permanently bonded crowns. Unlike conventional methods for removing crowns requiring sectioning, the 4638 "Power Crown Removers" rather streamlines crown removal utilizing push and pull mechanics (opposing forces) and pre-drilled holes.

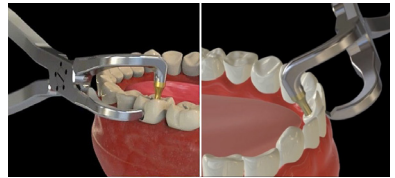


4638-1  
Crown  
Remover (L)



4638-2  
Crown  
Remover (R)

4636 2.0mm Diamond Bur- Gold (5pack): For Regular Crowns  
4637 2.0mm Diamond Bur- Silver (5pack): For Zirconia Crowns



# DR. KIM HEADLIGHT

Code:   
KIMS

**Use:** Designed to enhance the clarity and brightness of the field of view during medical and dental procedures. Unlike traditional loupe systems, the Dr. Kim Headlight does not contact the face. The design is lightweight and comfortable to wear for extended periods thus reducing fatigue and strain on the neck and back.



KIMS  
Dr. Kim Headlight

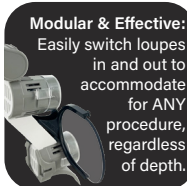
**See More:**  
100,000  
Lumens  
for full  
visibility  
ALL of  
the  
time.



**Full Control:**  
Change  
brightness  
of LED  
quickly  
using dial  
control.



**Modular & Effective:**  
Easily switch loupes  
in and out to  
accommodate  
for ANY  
procedure,  
regardless  
of depth.



KIMV  
Dr. Kim ErgoView  
Headlight

# POWER PERIOSTEUM RELEASE KIT

Code:   
6455FS

Patent No. [USD700329S/USD743550S](#)

A set of five (5) instruments designed to perform Periosteal Release Incisions (PRI) or the expansion of soft tissue flaps utilizing brush technique instead of inconsistent incisions using a scalpel blade and risk perforating the gums.



**6455**  
Soft Tissue  
Brush  
Regular Left



**6455S**  
Soft Tissue  
Brush  
Small Left



**6456S**  
Soft Tissue  
Brush  
Small Right



**6456**  
Soft Tissue  
Brush  
Regular Right

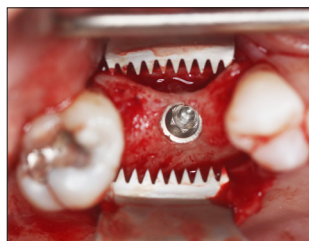
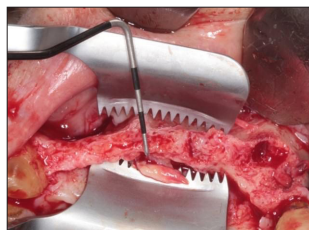


**6511E**  
Tissue Suture  
Corn Forceps  
18cm

# POWER FLAP RETRACTORS

Code:   
6458

A set of two (2) 12mm and 18mm self-flap retractors designed to hold open flaps during surgical procedures. The hands-free device provides a better field of view, more operating room, and an extra hand for the procedure.



# POWER IMPLANT GUIDE KIT™

Code:  
1979B



A complete free-hand Implant guide system utilizing five (5) instruments for the positioning and placement of single tooth or multiple teeth implant cases. The tapered self-centering guides for anteriors and posteriors account for varying sized gaps between teeth thus proving immediate guidance for pilot placement while the Multi-1 and Multi-2 guides assist with adjacent implant placement and multi site implants.



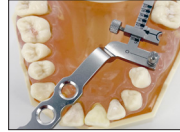
1979-1  
Anterior Self  
Centering Guide



1979-2  
Posterior Self  
Centering Guide



1950-1  
Multi 1 Implant  
Guide



1950-1  
Multi 2 & 3 Implant  
Guide



1964N  
Edentulous  
Paralleling Guide

# POWER GBR KIT

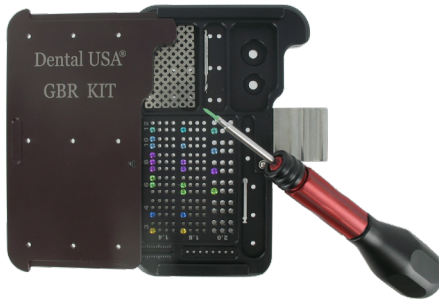
Code:  
1981N



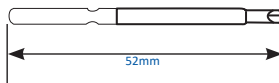
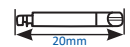
A complete guided bone regeneration kit used for many types of procedures including bone regeneration, bone grafting, insufficient bone, missing bone, or membrane placement.

## Guided Bone Regeneration Kit

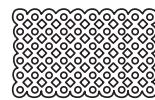
- 1981N-1 Screw 1.4x3mm 1pc
- 1981N-2 Screw 1.4x4mm 1pc
- 1981N-3 Screw 1.4x6mm 3pcs
- 1981N-4 Screw 1.4x8mm 3pcs
- 1981N-5 Screw 1.4x10mm 2pcs
- 1981N-6 Screw 1.4x12mm 1pc
- 1981N-7 Screw 1.6x3mm 1pc
- 1981N-8 Screw 1.6x4mm 1pc
- 1981N-9 Screw 1.6x6mm 2pcs
- 1981N-10 Screw 1.6x8mm 2pcs
- 1981N-11 Screw 1.6x10mm 1pc
- 1981N-12 Screw 1.6x12mm 1pc
- 1981N-13 Screw 2.0x6mm 1pc
- 1981N-14 Screw 2.0x8mm 1pc
- 1981N-15 Screw 2.0x10mm 1pc
- 1981N-16 Screw 2.0x12mm 1pc
- 1981N-M Titanium Mesh 36x22x0.1mm 1pc
- 1981N-D Fix Screw Pilot Drill 1.2mm 1pc
- 1981N-20 Screw Driver Short (Handpiece) 1pc
- 1981N-21 Screw Driver Long (Hand Driver) 1pc
- 1981N-22 Screw Driver Handle 1pc



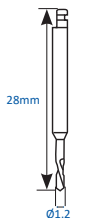
Remover Driver



Hole Pore Ø1.4



Pilot Drill



# ATRAUMATIC EXTRACTION FORCEPS

Code:  
5040



**Use:** A complete set of six (6) universal extraction forceps used for special subgingival or any regular (any) tooth extractions. Unlike conventional forceps, the 5040 "Atraumatic Forceps" were specially designed with a higher hinge point for less force needed to perform extractions while maintaining maximum control during use.



4974P  
Upper  
Premolar



4975P  
Lower  
Premolar



4976P  
Upper  
Anterior



4977P  
Lower  
Anterior



4979P  
Upper  
Molars



4980CP  
Lower  
Molars



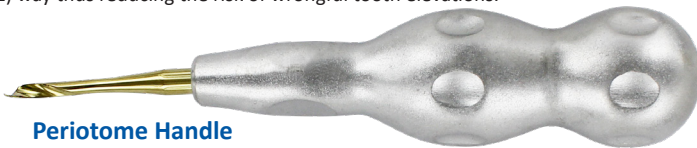
# POWER TWIST

Code:  
4032



Patent No. D700331S / D700329S

A universal extraction set of six (6) instruments utilizing patented twist designs for severing the periodontal ligament and the elevation of special decayed tooth cases or regular extractions. Unlike conventional methods using standard elevators with two (2) working ends, the 4032 "Power Twist Elevator and Periostome Set" engages one (1) way thus reducing the risk of wrongful tooth elevations.



Periostome Handle



3894G  
Power Twist  
Periostome  
4mm STR-L



3895G  
Power Twist  
Periostome  
4mm STR-R



3896G  
Power Twist  
Periostome  
4mm CVD-L



3897G  
Power Twist  
Periostome  
4mm CVD-R



4023  
Power Twist  
Elevator  
3mm STR-L



4024  
Power Twist  
Elevator  
3mm STR-R



Elevator Handle

www.powerdentalgroup.com



# FLEX LUXATION SET

Code:  
4035



Patent No. [USD700331S/USD700329S](#)

A complete and universal set of (6) durable luxators designed with tapered tips for deeper socket penetration when luxating is being performed. The titanium coating and flexible metal material allows for greater control and positioning during extraction procedures thus reducing the risk of damage to surrounding teeth and tissues.



4035-1  
STR 2.5mm  
Gold Tip



4035-2  
CVD 2.5mm  
Gold Tip



4035-3  
STR 3.5mm  
Gold Tip



4035-4  
CVD 3.5mm  
Gold Tip



4035-5  
STR 4.5mm  
Gold Tip



4035-6  
CVD 4.5mm  
Gold Tip

# FLEX ELEVATOR SET

Code:  
4034



Patent No. [USD700329S](#), [USD743550S](#)

A set of six (6) universal and durable elevators made with high carbon spring steel used for full mouth and heavy-lifting extractions. The heavy lifting elevators are titanium coated which allow for more control and stability during tooth extractions.



4034-1  
Apexo 301  
STR 2.9mm  
Gold Tip



4034-4  
Seldin 34S  
STR 4.0mm  
Gold Tip



4034-2  
Apexo 301  
IN 2.9mm  
Gold Tip



4034-3  
Apexo 301  
OUT 2.9mm  
Gold Tip



4034-5  
E77 IN  
4.0mm  
Gold Tip



4034-6  
E77 OUT  
4.0mm  
Gold Tip

# FLEX PDL ELEVATOR GOLD SET

Code:  
3799



Patent No. D700331S/D700329S

A tactical set of seven (7) varying extraction instruments for luxating and severing the periodontal ligament with minimal trauma to the surrounding tissue. These instruments are adaptable and designed with the weight of a luxator and the precision of a periosteum for any tooth extraction case.



3799-1  
3mm STR  
Gold Tip



3799-2  
3mm CVD  
Gold Tip



3799-3  
Spade STR  
Gold Tip



3799-4  
Distal  
Small  
Gold Tip



3799-5  
Mesial  
Small  
Gold Tip



3799-6  
Distal  
Large  
Gold Tip



3799-7  
Mesial  
Large  
Gold Tip

# PROSTHETIC SCREW & IMPLANT FIXTURE REMOVER KIT

Code:  
7822



A complete implant screw and extraction kit with added accessories to aid in the removal of failed implants, stripped and or fractured screws. The kit is designed with multiple fixture removers with crossed threads for engaging with any implant size. Additionally, screw removal instruments are included to remove both fractured or stripped prosthetic screws. removal of failed implants as well as stripped & fractured screws.



# C & L SINUS KIT: CRESTAL & LATERAL UNIVERSAL KIT

Code:  
7826



An all-in-one system to perform crestal and lateral sinus lifts. The kit is designed with added accessories for strategic procedural approaches and specially designed reamers and burrs to prevent membrane perforation.



# POWER TORQUE DRIVER

Code:  
1984

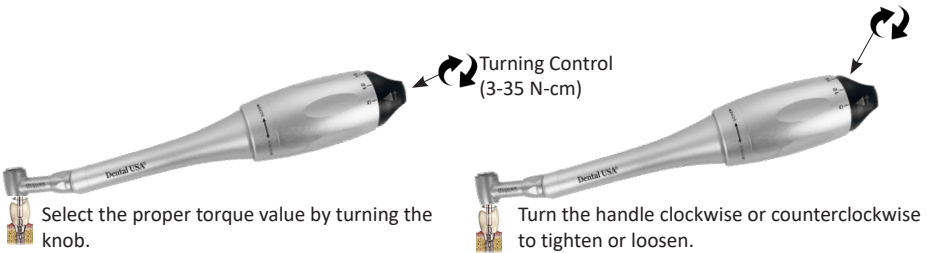


**Drivers (1.2mm)** Head can be separated from body for sterilization

S: 23.5mm

L: 30mm

Our torque driver is able to reach deep molar areas without difficulty compared to other torque drivers.



# POWER CENTRIFUGE MASTER II

Code:  
7824N



- Ten automatic programs and RPMs for each application
- Simple navigation
  - Select program
  - Rotate dial
  - Press dial
- Optimal and stable temperature
- Patented

*Sold Separately*



**POWER  
CATALOG**



**FULL  
CATALOG**

